

Switch

DIP Switch Series

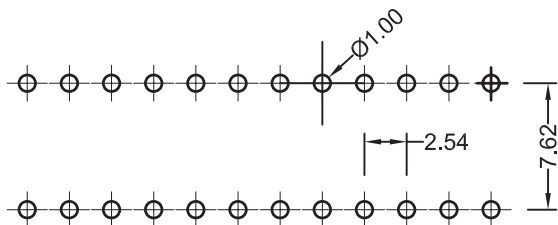
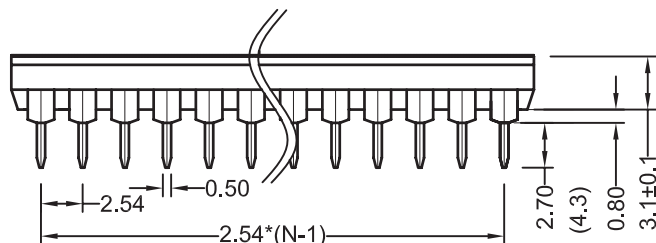
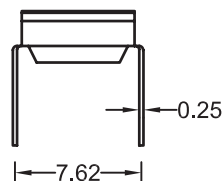
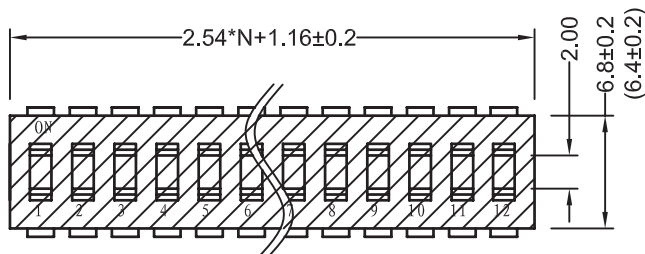
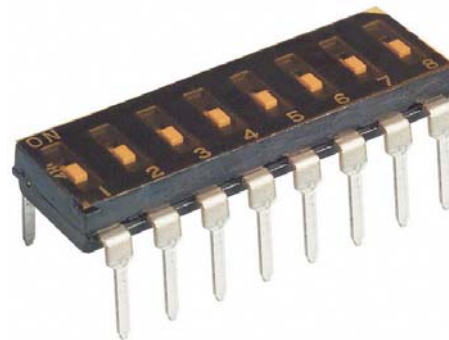
KLS7-KM End-stackable Through Hole Type DIP Switch

Specifications

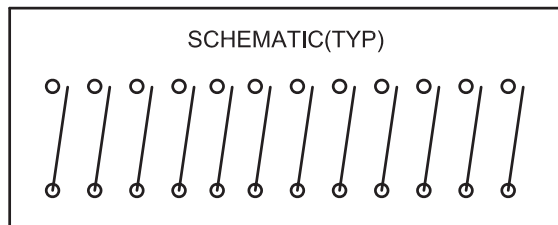
- Contact Rating: 25 mA at 24VDC (switching)
100 mA at 50VDC (steady state)
- Life: 1,000 cycles
- Contact Resistance: 100mΩ Max.
- Insulation Resistance: 100MΩ at 100VDC Min
- Dielectric Strength: 300VAC Min
- Storage Temperature: -40°C ~ 85°C
- Operating Temperature: -25°C ~ 70°C.
- Operation Force : 8N Max.

Materials

- Base & Cover: PPS (UL94V-0)
- Actuator: PA46 (UL94V-0).
- Contacts: Brass, Gold / Tin Plate
- Terminals: Brass, Gold / Tin Plate



P.C.B. LAYOUT



ORDER INFORMATION

KLS7-KMR - XX - N - 0 0

- Part Number
- KMR : Recessed Type Dip Switch
- Number of Pos.: 01~12 Pos.
- Packaging: 0=Tube
1: With sealed
- Color: N=Black