



KAM

PRODUCT SPECIFICATION / APPROVAL SHEET

CUSTOMER:	
PART No.:	SP-5R5-Z505UY

Please confirm your acceptance of this approval sheet by return fax.	JINZHOU KAIMEI POWER CO.,LTD TECHNOLOGY DEPARTMENT ADDRESS:27# Rain Street High Technology District Jinzhou City Tel:0416-3887775 Fax:0416-3886367									
	<table border="1"><tr><td>Spec No.</td><td></td></tr><tr><td>Issue Date</td><td>2013.7</td></tr><tr><td>Edition</td><td>No.1</td></tr><tr><td>Revised Date</td><td></td></tr></table>			Spec No.		Issue Date	2013.7	Edition	No.1	Revised Date
Spec No.										
Issue Date	2013.7									
Edition	No.1									
Revised Date										
CONFIRMATION SIGNATURE	<table border="1"><thead><tr><th>DRAW</th><th>EDAM</th><th>APPR</th></tr></thead><tbody><tr><td></td><td></td><td></td></tr></tbody></table>			DRAW	EDAM	APPR				
	DRAW	EDAM	APPR							

PRODUCT SPECIFICATION / APPROVAL SHEET

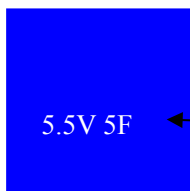
1. General Specification

Item		Specification/Condition
01	Part No.	SP-5R5-Z505UY
02	Rate discharge capacitance (F 25°C ΔV=3.0V-2.5V I=0.1A)	5.0
03	Capacitance tolerance	-20%~+80%
04	Rated Voltage U ₀ (V)	5.5
05	Operating temperature range	-40°C~70°C
06	MAX.ESR(mΩ 1KHz)	140
07	Leakage current (mA 72h)	0.05
08	Cycle life Expectancy	After nominal voltage,500,000 times charge-discharge circle ΔC/C ≤30% of the initial value ,ESR≤4 times of the specified value(25°C).

2. Environmental Specification

Item		Specification/Condition
01	Temperature characteristics	+70°C, ΔC/C ≤30% of the initial value, ESR≤specified value (25°C) -40°C, ΔC/C ≤50% of the initial value, ESR≤4 times of specified value (25°C)
02	High temperature load characteristics	After +70°C,nominal voltage, 1000h, ΔC/C ≤30% of the initial value, ESR≤4 times of specified value (25°C)。
03	High temperature without load characteristics	+70°C, 1000h±4, ΔC/C ≤30% of the initial value, ESR≤2times of specified value (25°C)
04	Humidity Resistance	After +40°C, 90--95%RH, 240h, ΔC/C ≤30% of the initial measured value, IL≤2 times of specified value (25°C) ,ESR≤4 times of specified value (25°C)。

3. KAM MARK



(1)

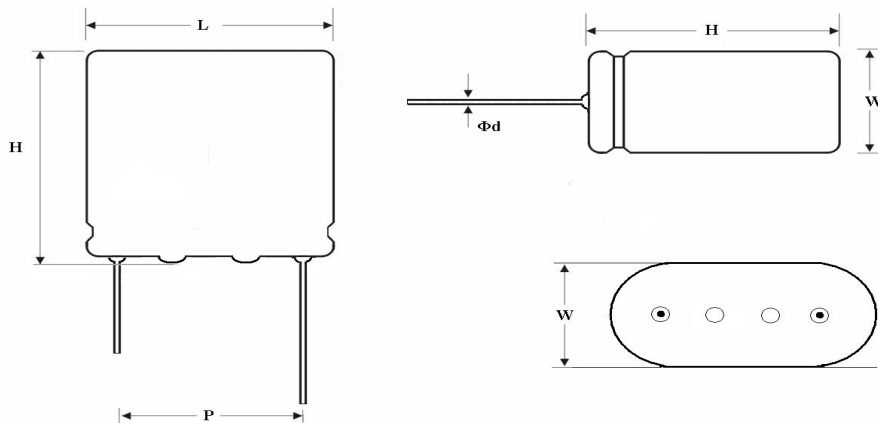
(1)、Rated capacitance and rated voltage

4. KAM type

□□□ - □□□ - □ □□□ □ □□□

Series	code	voltage symbol	Structure symbol	Structure type	Rated Capacitance symbol	Rated Capacitance	Capacitance Tolerance symbol	Capacitance Tolerance	Lead mode symbol	Lead mode	Additional sign	In the absence of special design is adopted.
power	SP	2.5V	2R5	wind	J	0.1F	104	±10%	S	double-screw bolt	L	In the absence of special design is adopted.
energy	SE	2.7V	2R7	lamination	D	0.22F	224	±20%	T	lines	Y	
High specific power	HP	5.0V	5R0	combined	Z	0.33F	334	-10%~20%	U	Contact	C	
high-energy-density	HE	5.5V	5R5			0.47F	474	-20%~80%	V			
Low resistance type	LR	7.5V	7R5			1.0F	105					
						2.0F	205					
						3.3F	335					
						4.7F	475					
						8.0F	805					
						10F	106					
						20F	206					
						30F	306					
						50F	506					
						90F	906					
						100F	107					
						120F	127					
						150F	157					
						300F	307					
						600F	607					
						1500F	158					
						3000F	308					

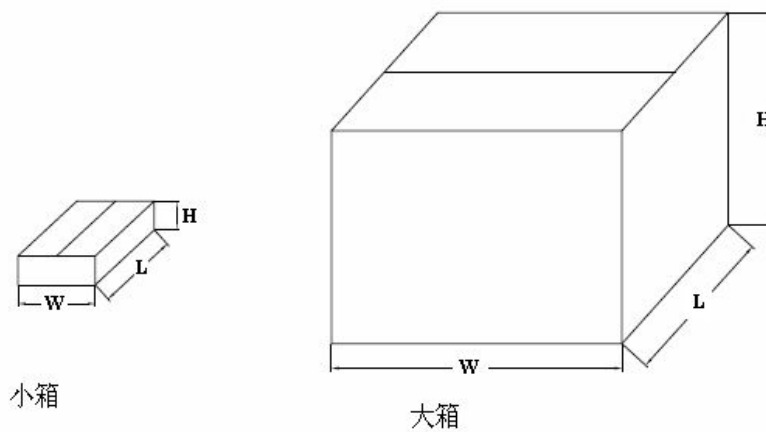
5. Figure and Dimension



Dimension(mm $L \times W \times H$) ± 1 mm	10.5×27×21
Down-lead distance(mm P)	15±0.5
Down-lead diameter(mm Φd)	0.6±0.05

6. Packaging

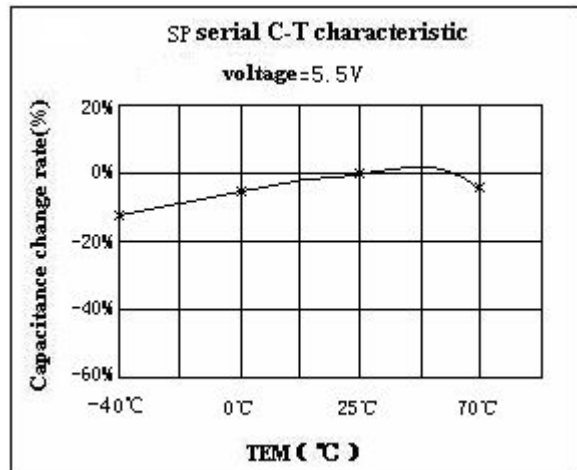
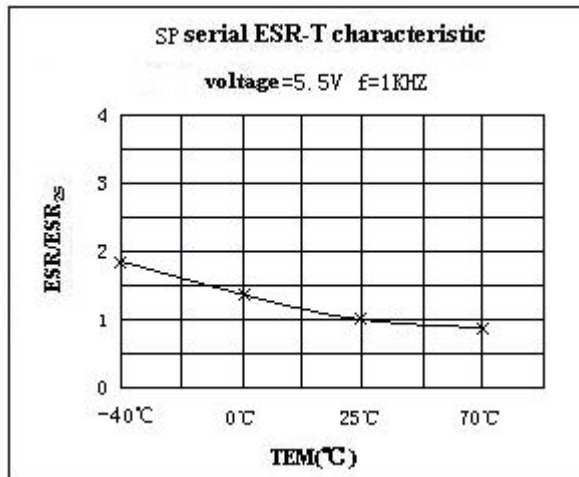
TYPE	QUANTITY(PCS)			Dimension ($L \times W \times H$)mm	
	/bag	/ Inner	/ Outer	Inner	Outer
SP-5R5-Z505UY	16	112	672	270×195×95	415×295×310



7. Test result

KAMCAP temperature and life characteristics test

(1)、Temperature characteristics



(2)、Life characteristics

