

**Ordering information**
**1) SS4 2) -1A 3) - 4 3) - 4**
**1) Current Rating** - 01,02,03,05,06,10,15,20,30A

**2) Additional Schematic**

 B; without Cx  
 D; Cx behind of L  
 E; without L

**3) Case type**

A1,A2,A3

**4) Special Device-** (empty), add suffix B (options)

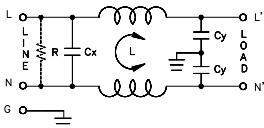
 - (empty); Standard  
 B; for Cx=0.1uF; Cy=3300pF

**5) Bleeder resistor** - (empty), add suffix R (options)

R ; R=1M ohm

**6) Output terminal type**

 Q ; fast-on(6.3mm)  
 S ; screw  
 W ; with wire

**Schematic type**
**1A**

**Components table**

Code	Case	Cx(uF)	Cy(pF)	Inductance L = unit x 2 W Amps											
				1A	2A	3A	5A	6A	10A	15A	20A	30A			
1A	A1	0.033	2200	10	2.5	1.2	1	0.8	0.3	X	X	X			
		6.1	3300	10	2.5	1.2	1	0.8	0.3	X	X	X			
	A2	0.033	2200	15	2.5	2	1.2	0.8	1	0.8	0.6	X			
		6.1	3300	15	2.5	2	1.2	0.8	1	0.8	0.6	X			
	A3	0.033	2200	20	10	8	4	2	1.2	0.9	0.7	0.3			
		6.1	3300	20	10	8	4	2	1.2	0.9	0.7	0.3			

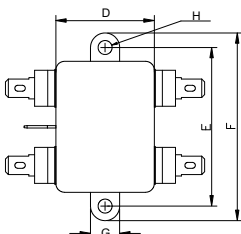
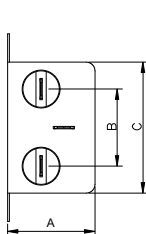
**Insertion loss table**
**(In 50ohm system according IEC/CISPR No.17)**

Case	Cx(uF)	Cy(pF)	Rating	Comm. Mode(L-G)in MHz						Diff Mode(L-L)in MHz					
				.15	.5	1	5	10	30	.15	.5	1	5	10	30
A1	0.033	2200	1A	39	29	42	48	49	38	2	16	30	62	61	22
			2A	28	36	40	46	49	40	1	9	17	58	60	17
			3A	20	28	32	44	50	43	1	8	14	49	66	32
			5A	21	30	35	48	51	40	1	8	14	42	53	26
			6A	18	23	28	45	51	45	1	8	14	45	61	30
			10A	11	17	21	37	43	37	1	8	14	33	59	27

\* please call for other's combinations

**Mechanical Dimension**

 unit: mm  
 inch

**A case series**


Case	A1	A2	A3
A	17.5	30	30
B	34	26.5	30.1
C	45	45	51.8
D	24.4	33.8	46.5
E	54.1	54.5	60.9
F	64.5	64.5	70.9
G	10	10	10
H	2-φ4.2	φ4.2	φ4.2