

FFC/FPC Connectors

KLS-242G-1.0

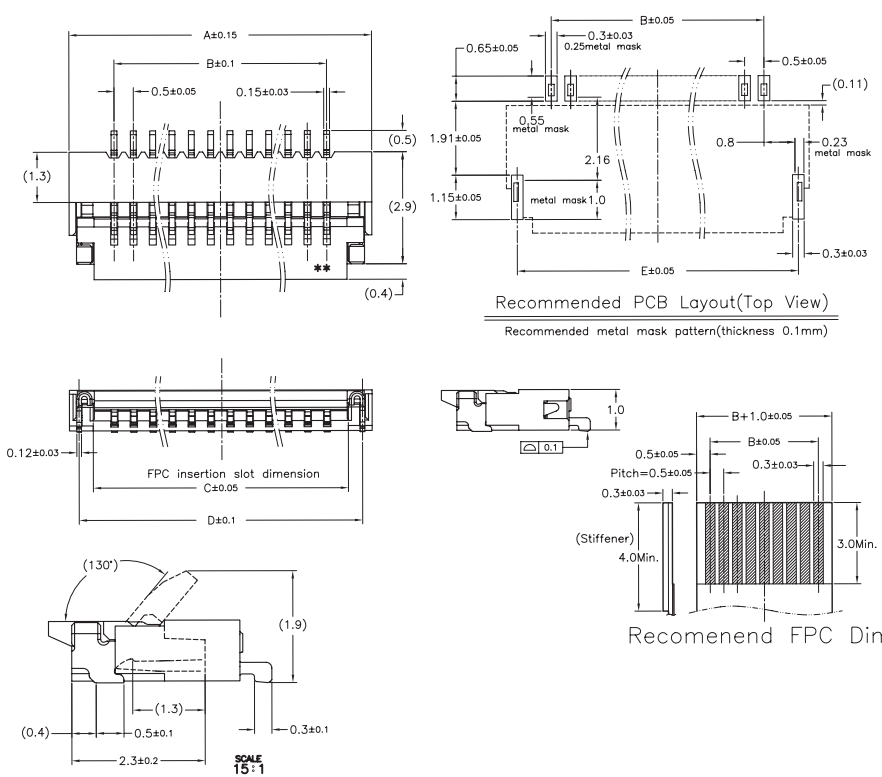
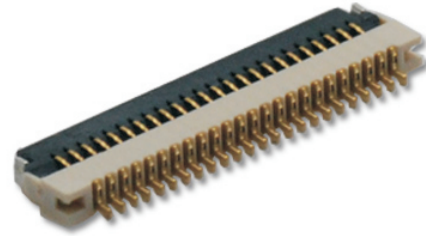
Pitch 0.5mm FPC Connector SMT Type

Material:

Housing: LCP UL94V-0
Actuator: LCP UL94V-0
Terminal: Copper alloy
Solder Pin: Copper alloy

Plating:

Terminal: Gold Flash Over Nickel
Solder Pin: Tin over Nickel lead free



Hole	A	B	C	D	F
4	3.83	1.5	2.60	3.33	3.27
5	4.33	2.0	3.10	3.83	3.77
6	4.83	2.5	3.60	4.33	4.27
7	5.33	3.0	4.10	4.83	4.77
8	5.83	3.5	4.60	5.33	5.27
9	6.33	4.0	5.10	5.83	5.77
10	6.83	4.5	5.60	6.33	6.27
11	7.33	5.0	6.10	6.83	6.77
12	7.83	5.5	6.60	7.33	7.27
13	8.33	6.0	7.10	7.83	7.77
14	8.83	6.5	7.60	8.33	8.27
15	9.33	7.0	8.10	8.83	8.77
16	9.83	7.5	8.60	9.33	9.27
17	10.33	8.0	9.10	9.83	9.77
18	10.83	8.5	9.60	10.33	10.27
19	11.33	9.0	10.10	10.83	10.77
20	11.83	9.5	10.60	11.33	11.27
21	12.33	10.0	11.10	11.83	11.77
22	12.83	10.5	11.60	12.33	12.27
23	13.33	11.0	12.10	12.83	12.77
24	13.83	11.5	12.60	13.33	13.27
25	14.33	12.0	13.10	13.83	13.77
26	14.83	12.5	13.60	14.33	14.27
27	15.33	13.0	14.10	14.83	14.77
28	15.83	13.5	14.60	15.33	15.27
29	16.33	14.0	15.10	15.83	15.77
30	16.83	14.5	15.60	16.33	16.27
31	17.33	15.0	16.10	16.83	16.77
32	17.83	15.5	16.60	17.33	17.27
33	18.33	16.0	17.10	17.83	17.77
34	18.83	16.5	17.60	18.33	18.27
35	19.33	17.0	18.10	18.83	18.77
36	19.83	17.5	18.60	19.33	19.27
37	20.33	18.0	19.10	19.83	19.77
38	20.83	18.5	19.60	20.33	20.27
39	21.33	19.0	20.10	20.83	20.77
40	21.83	19.5	20.60	21.33	21.27
41	22.33	20.0	21.10	21.83	21.77
42	22.83	20.5	21.60	22.33	22.27
43	23.33	21.0	22.10	22.83	22.77
44	23.83	21.5	22.60	23.33	23.27
45	24.33	22.0	23.10	23.83	23.77
46	24.83	22.5	23.60	24.33	24.27
47	25.33	23.0	24.10	24.83	24.77
48	25.83	23.5	24.60	25.33	25.27
49	26.33	24.0	25.10	25.83	25.77
50	26.83	24.5	25.60	26.33	26.27

ORDER INFORMATION

Product NO.: KLS1-242G-1.0-XX-T-R

Pos. NO. _____
Series No. _____
Height: 1.0mm _____
Pack: T=Tube R=Reel
T-SMT Pin
No. of 04 ~ 50pin

FFC/FPC Connectors

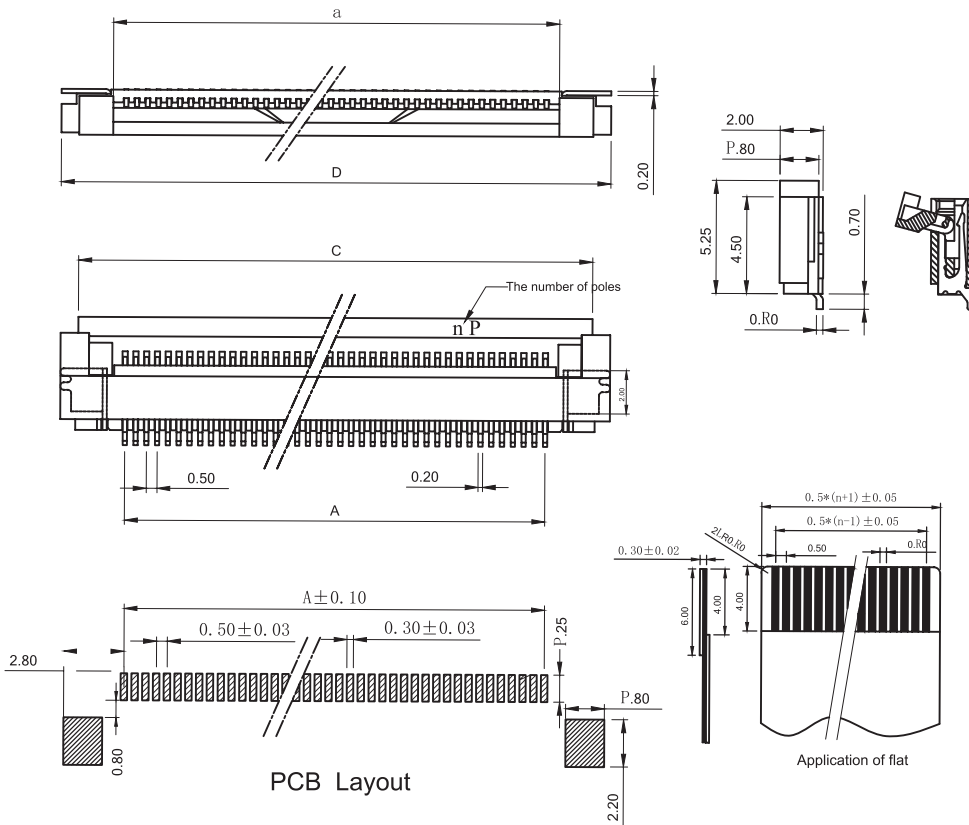
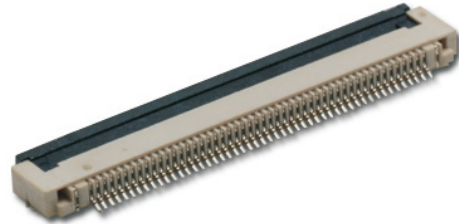
KLS-242G-2.0 Pitch 0.5mm FPC Connector SMT Type

Performance:

Rated current: 0.4A
 Rated voltage: 50V
 High voltage: 200V
 Contact resistance ≤ 20mΩ
 Insulation resistance: 500MΩ
 Operating temperature: -20 °C ~+85 °C

Material :

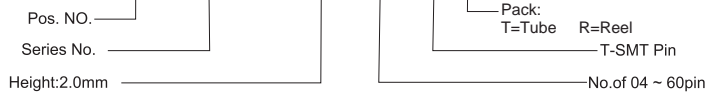
Plastic parts: LCP, UL94V-0
 Catch: LCP
 Insert spring: phosphor bronze, tin / gold
 Pad: brass, tin / gold



Hole	A	B	C	D
4	1.50	2.70	6.00	7.40
5	2.00	3.20	6.50	7.90
6	2.50	3.70	7.00	8.40
7	3.00	4.20	7.50	8.90
8	3.50	4.70	8.00	9.40
9	4.00	5.20	8.50	9.90
10	4.50	5.70	9.00	10.40
11	5.00	6.20	9.50	10.90
12	5.50	6.70	10.00	11.40
13	6.00	7.20	10.50	11.90
14	6.50	7.70	11.00	12.40
15	7.00	8.20	11.50	12.90
16	7.50	8.70	12.00	13.40
17	8.00	9.20	12.50	13.90
18	8.50	9.70	13.00	14.40
19	9.00	10.20	13.50	14.90
20	9.50	10.70	14.00	15.40
21	10.00	11.20	14.50	15.90
22	10.50	11.70	15.00	16.40
23	11.00	12.20	15.50	16.90
24	11.50	12.70	16.00	17.40
25	12.00	13.20	16.50	17.90
26	12.50	13.70	17.00	18.40
27	13.00	14.20	17.50	18.90
28	13.50	14.70	18.00	19.40
29	14.00	15.20	18.50	19.90
30	14.50	15.70	19.00	20.40
31	15.00	16.20	19.50	20.90
32	15.50	16.70	20.00	21.40
33	16.00	17.20	20.50	21.90
34	16.50	17.70	21.00	22.40
35	17.00	18.20	21.50	22.90
36	17.50	18.70	22.00	23.40
37	18.00	19.20	22.50	23.90
38	18.50	19.70	23.00	24.40
39	19.00	20.20	23.50	24.90
40	19.50	20.70	24.00	25.40
41	20.00	21.20	24.50	25.90
42	20.50	21.70	25.00	26.40
43	21.00	22.20	25.50	26.90
44	21.50	22.70	26.00	27.40
45	22.00	23.20	26.50	27.90
46	22.50	23.70	27.00	28.40
47	23.00	24.20	27.50	28.90
48	23.50	24.70	28.00	29.40
49	24.00	25.20	28.50	29.90
50	24.50	25.70	29.00	30.40
51	25.00	26.20	29.50	30.90
52	25.50	26.70	30.00	31.40
53	26.00	27.20	30.50	31.90
54	26.50	27.70	31.00	32.40
55	27.00	28.20	31.50	32.90
56	27.50	28.70	32.00	33.40
57	28.00	29.20	32.50	33.90
58	28.50	29.70	33.00	34.40
59	29.00	30.20	33.50	34.90
60	29.50	30.70	34.00	35.40

ORDER INFORMATION

Product NO.: KLS1-242G-2.0-XX-T-R



FFC/FPC Connectors

KLS-242G-1.5

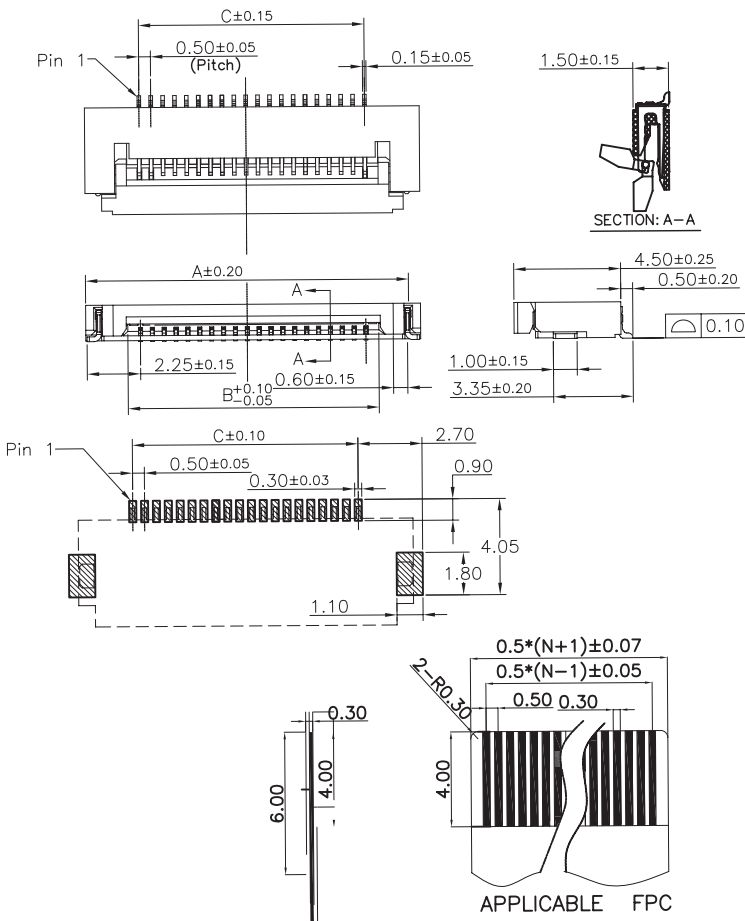
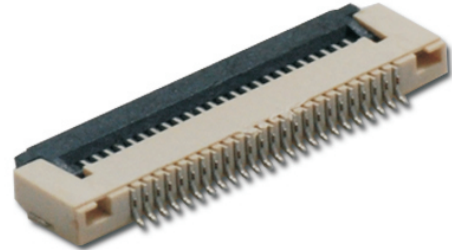
Pitch 0.5mm FPC Connector SMT Type

Material:

Housing: LCP UL94V-0
Actuator: LCP UL94V-0
Terminal: Copper alloy
Solder Pin: Copper alloy

Plating:

Terminal: Gold Flash Over Nickel
Solder Pin: Tin over Nickel lead free



Hole	A	B	C
4	6.10	2.60	1.50
5	6.60	3.10	2.00
6	7.10	3.60	2.50
7	7.60	4.10	3.00
8	8.10	4.60	3.50
9	8.60	5.10	4.00
10	9.10	5.60	4.50
11	9.60	6.10	5.00
12	10.10	6.60	5.50
13	10.60	7.10	6.00
14	11.10	7.60	6.50
15	11.60	8.10	7.00
16	12.10	8.60	7.50
17	12.60	9.10	8.00
18	13.10	9.60	8.50
19	13.60	10.10	9.00
20	14.10	10.60	9.50
21	14.60	11.10	10.00
22	15.10	11.60	10.50
23	15.60	12.10	11.00
24	16.10	12.60	11.50
25	16.60	13.10	12.00
26	17.10	13.60	12.50
27	17.60	14.10	13.00
28	18.10	14.60	13.50
29	18.60	15.10	14.00
30	19.10	15.60	14.50
31	19.60	16.10	15.00
32	20.10	16.60	15.50
33	20.60	17.10	16.00
34	21.10	17.60	16.50
35	21.60	18.10	17.00
36	22.10	18.60	17.50
37	22.60	19.10	18.00
38	23.10	19.60	18.50
39	23.60	20.10	19.00
40	24.10	20.60	19.50
41	24.60	21.10	20.00
42	25.10	21.60	20.50
43	25.60	22.10	21.00
44	26.10	22.60	21.50
45	26.60	23.10	22.00
46	27.10	23.60	22.50
47	27.60	24.10	23.00
48	28.10	24.60	23.50
49	28.60	25.10	24.00
50	29.10	25.60	24.50
51	29.60	26.10	25.00
52	30.10	26.60	25.50
53	30.60	27.10	26.00
54	31.10	27.60	26.50
55	31.60	28.10	27.00
56	32.10	28.60	27.50
57	32.60	29.10	28.00
58	33.10	29.60	28.50
59	33.60	30.10	29.00
60	34.10	30.60	29.50

ORDER INFORMATION

Product NO.: KLS1-242G-1.5-XX-T-R

Pos. NO. _____ Pack: T=Tube R=Reel
Series No. _____ T-SMT Pin
Height: 1.5mm _____ No. of 04 ~ 60pin