

## IC Socket Series

KLS1-216 IC SOCKET 2.54mm(0.100")

### Electrical Characteristics:

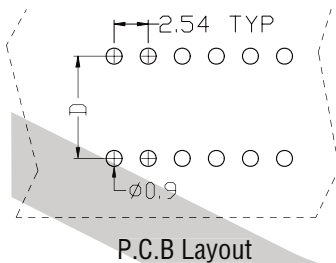
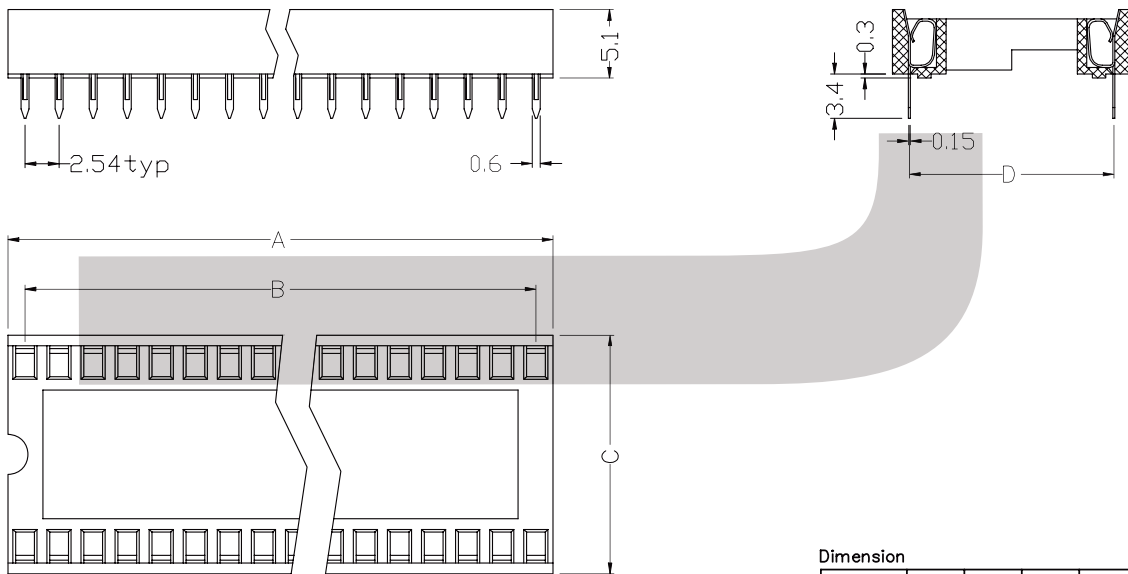
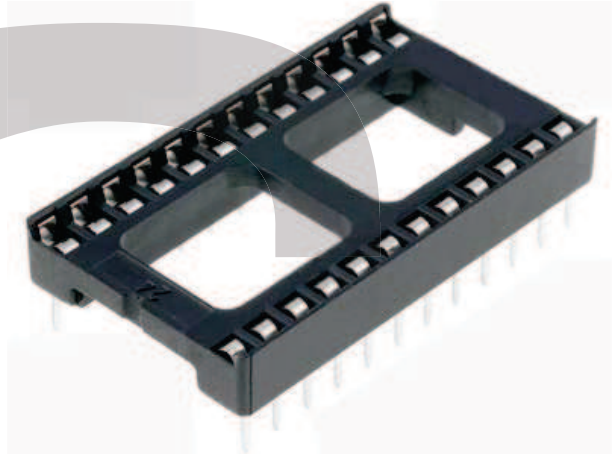
Current Rating: 1 AMP  
Insulator Resistance: 5000MΩmin. at DC 500V  
Contact Resistance: 20mΩmax. at DC 100mA  
Operating Temperature: -45°C~+105°C

### Material:

Housing: 30% Glass filled PBT UL94V-0  
Contacts: Phosphor Bronze  
Plating: Tin plated: 100u" over 50u" nickel

### Features:

\*IC Socket Strips - with screw machind pins



Dimension

| position | A     | B     | C     | D     |
|----------|-------|-------|-------|-------|
| 08       | 10.16 | 7.62  | 10.16 | 7.62  |
| 14       | 17.78 | 15.24 | 10.16 | 7.62  |
| 16       | 20.32 | 17.78 | 10.16 | 7.62  |
| 18       | 22.86 | 20.32 | 10.16 | 7.62  |
| 20       | 25.40 | 22.86 | 10.16 | 7.62  |
| 24       | 30.48 | 27.94 | 10.16 | 7.62  |
| 24       | 30.48 | 27.94 | 17.78 | 15.24 |
| 28       | 35.56 | 33.02 | 10.16 | 7.62  |
| 28       | 35.56 | 33.02 | 17.78 | 15.24 |
| 32       | 40.54 | 38.10 | 17.78 | 15.24 |
| 40       | 50.80 | 48.26 | 17.78 | 15.24 |
| 42       | 53.21 | 50.80 | 17.78 | 15.24 |
| 48       | 60.80 | 58.42 | 17.78 | 15.24 |

## ORDER INFORMATION

Product No.: KLS1-216-XX-D

Pos. No. \_\_\_\_\_ D=15.24mm plastic space \_\_\_\_\_ Without D=7.62mm plastic space  
IC Socket 2.54mm Series \_\_\_\_\_ Number of Contacts: XX=08~48Pin