



Product Datasheet  
Lens Series  
Last update: 21/1/2014

## DETAILS

Product Number: BK-LED-097WB25  
Type: Lens  
Color: Clear  
Diameter: 13.00mm  
Height: 7.40mm  
Shape: Round  
Optic Material: PMMA  
Holder Material: PC  
ROHS Compliant: Yes  
Date Updated: 8/1/2014

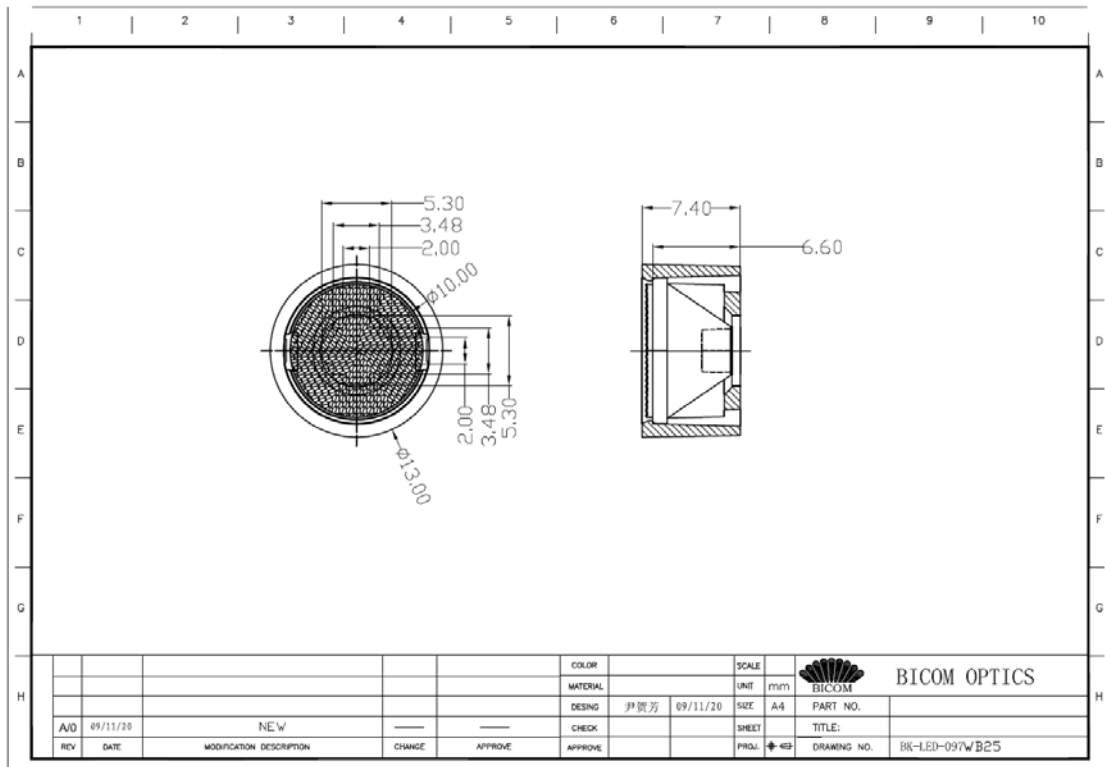


## Optical properties

LED	FWHM (50%)	FWHM (10%)	Efficiency	cd/lm	Beam Type
XLamp XP-G	25.6°	56.7°	90.8%	3.09	Middle

Shenzhen Baikang Optical Co.,Ltd.  
Add: B4 Building, Xinjianxing Industrial Park,  
Fengxin Road, Guangming District, Shenzhen  
Mail: 518107  
www.bicomoptics.com

Skype: szbaikang  
Fax: +86 755 82033711  
Phone: +86 755 29199996  
MSN: szbaikang@hotmail.com  
E-mail: sales@bicomoptics.com

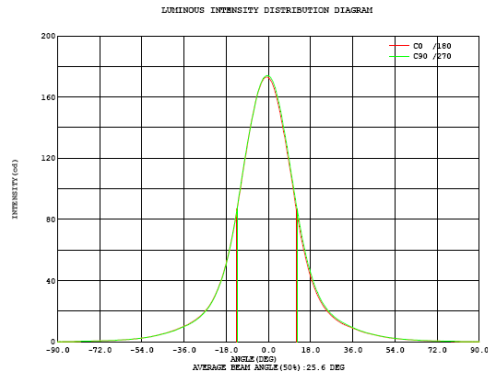
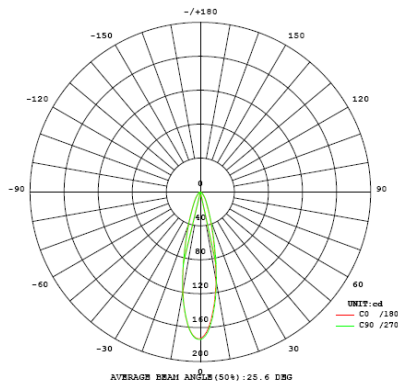


Shenzhen Baikang Optical Co.,Ltd.  
 Add: B4 Building, Xinjianxing Industrial Park,  
 Fengxin Road, Guangming District, Shenzhen  
 Mail: 518107  
 www.bicomoptics.com

Skype: szbaikang  
 Fax: +86 755 82033711  
 Phone: +86 755 29199996  
 MSN: szbaikang@hotmail.com  
 E-mail: sales@bicomoptics.com

**XLamp XP-G**

**I: 0.35A**



Intensity data:(deg , cd) C0 /180

A	I	A	I	A	I	A	I	A	I	A	I
-90.0	0	-58.5	1.609	-27.0	19.92	4.5	153.0	36.0	8.853	67.5	0.6879
-88.5	0	-57.0	1.843	-25.5	22.86	6.0	141.6	37.5	8.007	69.0	0.6313
-87.0	0.0777	-55.5	2.090	-24.0	26.49	7.5	128.6	39.0	7.123	70.5	0.5459
-85.5	0.0754	-54.0	2.363	-22.5	31.02	9.0	114.9	40.5	6.272	72.0	0.4360
-84.0	0.1021	-52.5	2.661	-21.0	36.67	10.5	100.8	42.0	5.620	73.5	0.3917
-82.5	0.1853	-51.0	3.074	-19.5	43.39	12.0	85.74	43.5	5.090	75.0	0.4005
-81.0	0.2152	-49.5	3.512	-18.0	51.22	13.5	72.14	45.0	4.577	76.5	0.3140
-79.5	0.2585	-48.0	4.019	-16.5	60.81	15.0	60.73	46.5	4.040	78.0	0.2563
-78.0	0.3317	-46.5	4.540	-15.0	72.16	16.5	51.06	48.0	3.554	79.5	0.2485
-76.5	0.3562	-45.0	5.197	-13.5	85.43	18.0	42.71	49.5	3.155	81.0	0.1764
-75.0	0.3872	-43.5	5.791	-12.0	99.07	19.5	35.75	51.0	2.738	82.5	0.1298
-73.5	0.4560	-42.0	6.512	-10.5	114.3	21.0	30.15	52.5	2.391	84.0	0.1420
-72.0	0.5104	-40.5	7.277	-9.0	128.3	22.5	25.89	54.0	2.115	85.5	0.0555
-70.5	0.5947	-39.0	8.180	-7.5	141.9	24.0	22.13	55.5	1.863	87.0	0
-69.0	0.6247	-37.5	9.146	-6.0	152.9	25.5	19.21	57.0	1.627	88.5	0
-67.5	0.7733	-36.0	10.12	-4.5	162.5	27.0	16.83	58.5	1.410	90.0	0.0477
-66.0	0.8920	-34.5	11.11	-3.0	169.2	28.5	15.02	60.0	1.255		
-64.5	0.9708	-33.0	12.48	-1.5	172.6	30.0	13.27	61.5	1.114		
-63.0	1.088	-31.5	13.97	0.0	172.7	31.5	11.87	63.0	0.9653		
-61.5	1.226	-30.0	15.66	1.5	169.5	33.0	10.79	64.5	0.8532		
-60.0	1.405	-28.5	17.51	3.0	162.6	34.5	9.846	66.0	0.7722		

**Electricity Parameter:**

Voltage : 3.200 V      Current : 0.3500 A  
 Power P: 1.120 W      Power Factor: 1.000

**Optical Parameter (Distance:3.160m) :**

Luminous flux = 99.18 lm      Efficiency: Eff=88.56 lm/W  
 Avg. Beam angle:      @ (25%):37.9deg      @ (50%):25.6deg      @ (75%):16.6deg      @ (10%):56.7deg  
 C0 /180:      @ (25%):37.7deg      @ (50%):25.5deg      @ (75%):16.4deg      @ (10%):56.6deg  
 C0 /180 Imax = 173.0 cd (G=-0.5deg) Io = 172.7 cd

H(β) Range:-90 - 90DEG	V(B) Range:-90 - 90DEG
H(β) Interval: 0.5DEG	V(B) Interval: 0.5DEG
Test Speed: HIGH	Test System:EVERFINE GO-SPEC316 SYSTEM V1.0.255
Temperature:25.3DEG	Humidity:65.0%
Operators:BICOM	Test Distance:3.160m [K=1.0000]
Test Date:2012-06-30	Remarks:

Shenzhen Baikang Optical Co.,Ltd.  
 Add: B4 Building, Xinjianxing Industrial Park,  
 Fengxin Road, Guangming District, Shenzhen  
 Mail: 518107  
 www.bicomoptics.com

Skype: szbaikang  
 Fax: +86 755 82033711  
 Phone: +86 755 29199996  
 MSN: szbaikang@hotmail.com  
 E-mail: sales@bicomoptics.com

XLamp XP-G

I: 0.35A

LUMINAIRE PHOTOMETRIC TEST REPORT

Table with 3 columns: NAME, TYPE, WEIGHT; DIMENSION, SPECIFICATION, SERIAL No.; MANUFACTURER, SURFACE, PROTECTION ANGLE.

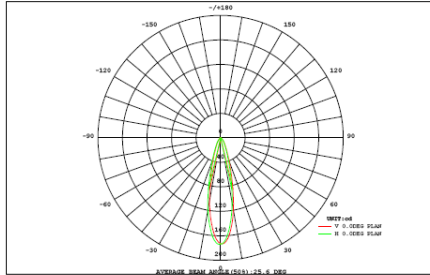


Table with 2 main sections: DATA OF LAMP (MODEL, XPG, NOMINAL POWER, RATED VOLTAGE, NOMINAL FLUX, LAMPS INSIDE, TEST VOLTAGE) and PHOTOMETRIC DATA (Imax, AVAILABILITY, Avai. FLUX, EFFICIENCY, TOTAL FLUX, beam angle).

AREA FLUX DIAGRAM table with columns for VERTICAL (DEG), AREA FLUX (lm), and horizontal angles. Includes summary rows for total flux (Φt) and beam angle (Φa).

H(β) Range:-90 - 90DEG
H(β) Interval: 0.5DEG
Test Speed: HIGH
Temperature:25.3DEG
Operators:BICOM
Test Date:2012-06-30
V(B) Range:-90 - 90DEG
V(B) Interval: 0.5DEG
Test System:EVERFINE GO-SPEC316 SYSTEM V1.0.255
Humidity:65.0%
Test Distance:3.160m [K=1.0000]
Remarks:

Shenzhen Baikang Optical Co.,Ltd.
Add: B4 Building, Xinjianxing Industrial Park,
Fengxin Road, Guangming District, Shenzhen
Mail: 518107
www.bicomoptics.com

Skype: szbaikang
Fax: +86 755 82033711
Phone: +86 755 29199996
MSN: szbaikang@hotmail.com
E-mail: sales@bicomoptics.com